



LABOR SITUATION

Office of Research

Danté Bartolomeo, Commissioner

FOR IMMEDIATE RELEASE

January 2024 Data

CT Unemployment Rate = 4.4%

US Unemployment Rate = 3.7%

Connecticut gains 7,400 payroll jobs in January as state jobless rate rises 0.2% to 4.4%

WETHERSFIELD, March 08, 2024 – Connecticut payroll jobs increased 7,400 (0.4%) in January 2024 to a level of 1,703,200, while the state’s jobless rate increased two-tenths of a percent to 4.4% (preliminary, seasonally adjusted data). Statewide nonfarm industry employment is 11,200 (0.7%) positions higher than January 2023 levels and is at a new post-COVID employment high. The state has now recovered **101.6%** (295,700) of the 291,100 nonagricultural jobs lost during the March-April 2020 COVID lockdown. The preliminary December 2023 job loss of 2,500 positions was revised lower by 1,400 jobs to a 3,900 loss. January 2024 exhibited a reacceleration of job gains. Connecticut’s January 2024 unemployment rate was higher by two-tenths of a percentage point to 4.4%. This is eight-tenths of a percentage point higher than a year ago (3.6%). *This release includes labor statistics from two different monthly surveys (residential and business) produced by the U.S. Bureau of Labor Statistics (BLS) in cooperation with the States and incorporates the most recent benchmark revisions and annual processing from the last year. See pages 3 and 4 for notes on the annual Connecticut labor statistic revisions.*

“Annual benchmark revisions left the December 2023 employment level unchanged, although the pattern of job change in prior months was revised,” said Patrick Flaherty, Director of the Office of Research at the Connecticut Department of Labor. “January’s job gains show Connecticut is off to a good start this year. The rise in the unemployment rate has been accompanied by labor force expansion as new labor force entrants look for work. Total payroll jobs are at their highest level since August 2008 with the private sector at an all-time high.”

Connecticut’s private sector employment increased 6,600 (0.5%) positions in January 2024 to 1,469,100 and stands higher by 7,600 jobs (0.5%) from the January 2023 level. The state’s private sector remains fully recovered (102.9%) from the April 2020 COVID employment lockdown trough. December’s preliminary private sector job decline of 2,900 (-0.2%) was revised lower by 1,200 jobs to a -4,100 (-0.3%) jobs loss. The **government supersector** increased by 800 jobs (0.3%) in January to a level of 234,100 jobs, 3,600 positions higher than year-ago levels. The public sector is now 86.9% recovered from the overall COVID April 2020 employment low point. The December 2023 government gain of 400 was revised lower by 200 to +200. *Connecticut’s total government supersector comprises all civilian federal, state, local, and tribal government employment, including public education and Native American casino jobs located on federally recognized tribal reservations.*

Six of the ten major industry *supersectors* increased jobs in January 2024, and three declined, while the **information supersector** was unchanged.

The seven industry *supersectors* that increased employment or were unchanged in January 2024 included:

Increasing Sectors			
Industry Sector	Amount of Increase	Percent Change	January 2024 Employment
Education & Health Services	+4,300	1.2%	360,800
Professional & Business Services	+3,200	1.4%	224,100
Leisure & Hospitality	+800	0.5%	154,100
Manufacturing	+800	0.5%	158,700
Government	+800	0.3%	234,100
Construction & Mining	+400	0.6%	62,400
Information	unchanged	0.0%	30,200

The three industry *supersectors* that decreased jobs in January 2024 were:

Decreasing Sectors			
Industry Sector	Amount of Decrease	Percent Change	January 2024 Employment
Trade, Transportation, & Utilities	-1,700	-0.6%	297,500
Other Services	-1,100	-1.7%	63,900
Financial Activities	-100	-0.1%	117,400

Connecticut Labor Market Areas (LMAs): Four of the six major Connecticut **LMAs** that are seasonally adjusted by the BLS had nonfarm employment increases in January 2024, while two had job declines. The largest **Hartford LMA** (0.3%, 581,800) added 1,700 jobs. The **Norwich-New London-Westerly LMA** (0.7%, 127,400) and the **New Haven LMA** (0.3%, 303,500) both gained 900 positions while the **Waterbury LMA** (0.3%, 66,900) increased 200 positions. The **Danbury LMA** (-0.5%, 77,600) was lower by 400 and the **Bridgeport-Stamford-Norwalk LMA** (-0.1%, 406,600) decreased 300 jobs.

Note: The six major Connecticut LMAs are independently estimated from the statewide data by the BLS and cover around 90% of the nonfarm employment in the state. Thus, estimates will not exactly sum to the statewide total.

Hours and Earnings: The January 2024 **private sector** workweek, *not seasonally adjusted*, averaged 33.3 hours. This is down two-tenths of an hour from the January 2023 average of 33.5 hours. Average hourly earnings at \$37.19 in January 2024, *not seasonally adjusted*, were up by \$1.19 (3.3%) from the January 2023 estimate of \$36.00. The resulting January 2024 private sector weekly wage averaged \$1,238.43, higher by \$32.43 (2.7%) from a year ago. The Consumer Price Index for All Urban Consumers (CPI-U, U.S. City Average, not seasonally adjusted) for January 2024 was up 3.1% from a year ago.

Note: Current all-employee private sector hours and earnings estimates can be volatile due to fluctuating sample responses.

Labor Force Data (residential household survey)

The preliminary January 2024 unemployment rate for Connecticut was estimated by the BLS Local Area Unemployment Statistics program (LAUS) to be **4.4%** (seasonally adjusted). This is higher by two-tenths of a percentage point over the month and is higher by eight-tenths of one percent compared to the January 2023 level of 3.6% after annual processing. The U.S. unemployment rate for January 2024 was 3.7%, unchanged from the December 2023 rate of 3.7% but is higher over the year from the U.S. jobless rate of 3.4% in January 2024.

Average weekly initial unemployment claims for first-time filers (AWIC) in Connecticut in January 2024 were 4,239, *not seasonally adjusted*. This is 975 (-18.7%) claims (*not seasonally adjusted*) lower than December 2023, and just 24 (0.6%) claims (*not seasonally adjusted*) higher than January 2023.

*The nonfarm employment estimate, derived from a survey of businesses, is a measure of jobs in the state; the unemployment rate and labor force estimates are based on a household survey, and measure the work status of people who live in Connecticut. Overall, as the national and state economies recover, volatility in monthly numbers can be expected. **Job and employment estimates are best understood in the context of their movement over several months rather than observed changes in a single month's value.***

*Next Connecticut Labor Situation release: Thursday, March 21, 2024
(Preliminary February 2024 data released on the new benchmark)*

Contact:
Communications, CT Department of Labor
CTDOL.Communications@ct.gov

Labor Market Information is available at: www.ctworkforce.info
200 Folly Brook Boulevard, Wethersfield, CT 06109-1114 www.ct.gov/dol
An Equal Opportunity/Affirmative Action Employer

Notes on Labor Data – Connecticut Labor Statistic Revisions, 2023 Benchmark Announcement

2023 Benchmark Revisions to Connecticut's Establishment Survey Data (Total Nonfarm Industry Employment Time Series – CES - Current Employment Statistics)

The workplace payroll survey data released today have been benchmarked to reflect more complete counts of nonfarm industry employment in the state. This annual procedure replaces the preliminary monthly *not seasonally adjusted* employment sample estimates with *actual* census job counts derived from unemployment insurance (UI) tax records through March 2023 - considered the official benchmark month. Preliminary second- and third-quarter monthly UI tax records also replace the sampled job estimates through September 2023. The industry survey data are then re-estimated monthly from October 2023 to December 2023 with better collected random probability samples from the preliminarily benchmarked September 2023 levels to bring the state nonfarm employment time series up to date.

Monthly **seasonally adjusted (SA) data** from January 2019 forward (5 years back) are also subject to revision due to varying concurrent seasonal components in the seasonal adjustment (SA) factor process. COVID pandemic lockdown measures, ever-changing demographics, and shifting weather dynamics have developed that have influenced monthly employment seasonality over the recent years. These seasonal factors get re-formulated and updated statistically to the present as well. Seasonally adjusted (SA) data allows us to better compare all months of the year. We compare data on a seasonally adjusted (SA) basis in the Connecticut Labor Situation, unless otherwise noted.

Connecticut's total nonfarm employment level for March 2023 (the official benchmark month) was revised **upward** by 4,900 jobs from the initially published estimate of 1,685,300 to 1,690,200, or +0.3% *seasonally adjusted SA* (+3,300 unadjusted, +0.2%). Going forward from March 2023, the monthly benchmark revision changes to Connecticut's December 2023 *seasonally adjusted (SA)* total nonfarm employment monthly levels were zero. Therefore, the Connecticut seasonally adjusted (SA) level for total nonfarm employment on the new benchmark was left unchanged for December 2023 at 1,695,800 SA (+200 unadjusted, 0.0%). Some of the underestimation in March 2023 (+4,900, SA) was related to apparent undercounting due to the warm winter last year. With the release of January 2024 newly benchmarked nonfarm employment level at 1,703,200 (SA), Connecticut has now recovered 295,700 or **101.6%** of the payroll jobs lost in the COVID lockdown (March-April 2020, -291,100) and is at a post-COVID employment high point (chart below).

Upcoming Changes to Current Employment Statistics (CES) Data

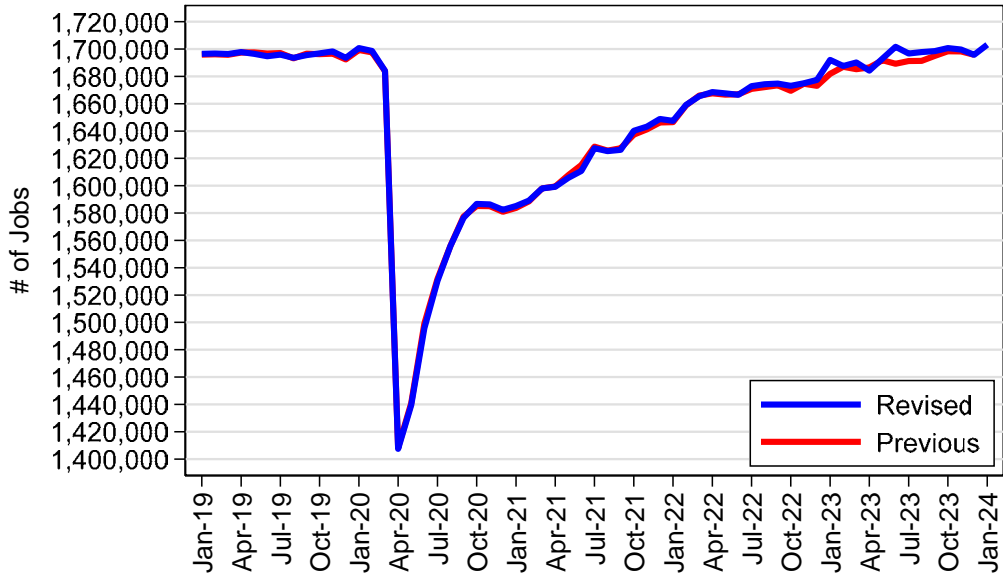
Effective with the release of January 2024 estimates on March 08, 2024, the Current Employment Statistics (CES) program will implement a new weight-smoothing procedure for state and metropolitan area employment data. Background information on the new weight-smoothing procedure is available on the BLS website at www.bls.gov/osmr/research-papers/2014/pdf/st140140.pdf.

Local Area Unemployment Statistics (LAUS) 2023 Annual Processing

As is done each year, the whole history of statewide Local Area Unemployment Statistics (LAUS) was revised from 1976 to 2023. Detailed information describing this change is available at <https://www.bls.gov/lau/gen-5-changes-in-2021.htm>. On an annual average basis, the revised Connecticut unemployment rate fell from 4.1% in 2022 to 3.8% in 2023, although it ended the year higher than the 2022 average (chart below).

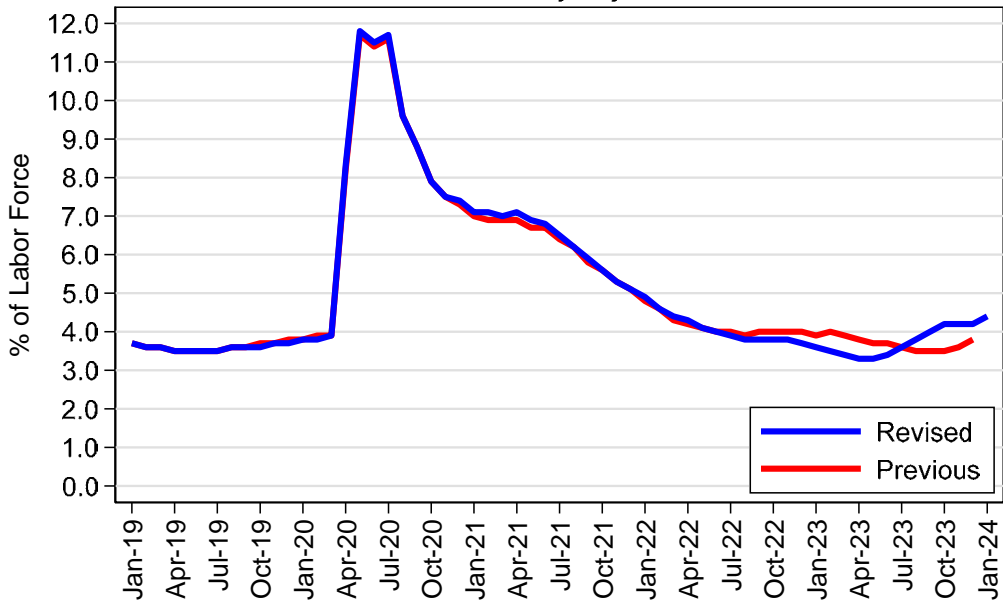
All revised nonfarm employment and unemployment data for Connecticut are available on Connecticut's Department of Labor's website under Labor Market Information www.ctworkforce.info.

Connecticut Payroll Jobs Seasonally Adjusted



Through January 2024 (previous data through December 2023)
Connecticut Nonfarm Employment Benchmark Revisions -- 2019 - 2024

Connecticut Unemployment Rate Seasonally Adjusted



Through January 2024 (previous data through December 2023)

NONFARM EMPLOYMENT

Jobs - by Place of Work

CONNECTICUT AND THE UNITED STATES - *Seasonally Adjusted*

	January 2024 P	December 2023 R	November 2023	October 2023	January 2023	Over Month Change	Over Month Rate	Over Year Change	Over Year Rate
CONNECTICUT	1,703,200	1,695,800	1,699,700	1,700,700	1,692,000	7,400	0.4%	11,200	0.7%
Total Private	1,469,100	1,462,500	1,466,600	1,467,900	1,461,500	6,600	0.5%	7,600	0.5%
Goods Producing Industries									
Mining	500	500	600	600	500	0	0.0%	0	0.0%
Construction	61,900	61,500	62,300	62,700	63,100	400	0.7%	-1,200	-1.9%
Manufacturing	158,700	157,900	158,100	157,700	158,800	800	0.5%	-100	-0.1%
<i>Durable Goods</i>	124,400	123,800	124,000	123,500	124,000	600	0.5%	400	0.3%
<i>Nondurable Goods</i>	34,300	34,100	34,100	34,200	34,800	200	0.6%	-500	-1.4%
Service Providing Industries									
Trade, Transportation & Utilities	297,500	299,200	300,000	301,400	296,100	-1,700	-0.6%	1,400	0.5%
<i>Wholesale</i>	61,500	61,200	61,200	61,700	61,000	300	0.5%	500	0.8%
<i>Retail</i>	164,600	165,500	166,000	166,500	168,000	-900	-0.5%	-3,400	-2.0%
<i>Transp, Warehousing & Utilities</i>	71,400	72,500	72,800	73,200	67,100	-1,100	-1.5%	4,300	6.4%
Information	30,200	30,200	30,200	30,400	31,900	0	0.0%	-1,700	-5.3%
Financial Activities	117,400	117,500	117,800	118,300	118,500	-100	-0.1%	-1,100	-0.9%
<i>Finance & Insurance</i>	97,800	97,800	98,100	98,700	98,800	0	0.0%	-1,000	-1.0%
<i>Real Estate, Rental & Leasing</i>	19,600	19,700	19,700	19,600	19,700	-100	-0.5%	-100	-0.5%
Professional & Business Services	224,100	220,900	220,500	221,900	223,000	3,200	1.4%	1,100	0.5%
<i>Prof, Scientific & Tech Services</i>	100,700	100,300	100,600	100,700	100,600	400	0.4%	100	0.1%
<i>Management of Companies</i>	31,800	31,600	31,700	31,600	31,500	200	0.6%	300	1.0%
<i>Admn & Support & Waste Mgt Serv</i>	91,600	89,000	88,200	89,600	90,900	2,600	2.9%	700	0.8%
Educational & Health Services	360,800	356,500	361,400	359,500	353,500	4,300	1.2%	7,300	2.1%
<i>Educational Services</i>	73,700	72,400	73,500	73,100	69,900	1,300	1.8%	3,800	5.4%
<i>Health Care & Social Assistance</i>	287,100	284,100	287,900	286,400	283,600	3,000	1.1%	3,500	1.2%
Leisure and Hospitality	154,100	153,300	152,100	151,700	153,700	800	0.5%	400	0.3%
<i>Arts, Entertainment & Recreation</i>	28,100	28,300	28,000	27,900	27,200	-200	-0.7%	900	3.3%
<i>Accommodation & Food Services</i>	126,000	125,000	124,100	123,800	126,500	1,000	0.8%	-500	-0.4%
Other Services	63,900	65,000	63,600	63,700	62,400	-1,100	-1.7%	1,500	2.4%
Government**	234,100	233,300	233,100	232,800	230,500	800	0.3%	3,600	1.6%
UNITED STATES	157,700,000	157,347,000	157,014,000	156,832,000	154,773,000	353,000	0.2%	2,927,000	1.9%

LABOR MARKET AREAS (LMA)

Labor Market Area employment estimates are made independently of Statewide estimates.

<i>Seasonally Adjusted data</i>	January 2024 P	December 2023 R	November 2023	October 2023	January 2023	Over Month Change	Over Month Rate	Over Year Change	Over Year Rate
Bridgeport-Stamford-Norwalk	406,600	406,900	407,700	407,400	408,600	-300	-0.1%	-2,000	-0.5%
Danbury	77,600	78,000	78,100	78,400	77,300	-400	-0.5%	300	0.4%
Hartford	581,800	580,100	581,500	582,800	579,300	1,700	0.3%	2,500	0.4%
New Haven	303,500	302,600	303,400	302,300	300,700	900	0.3%	2,800	0.9%
Norwich-New London-Westerly, RI	127,400	126,500	126,300	126,300	125,300	900	0.7%	2,100	1.7%
Waterbury	66,900	66,700	66,600	66,900	66,800	200	0.3%	100	0.1%
<i>Not Seasonally Adjusted data (Non-Classified Areas, State estimated - not BLS)</i>									
Enfield	42,800	43,300	43,400	43,200	42,600	-500	-1.2%	200	0.5%
Torrington-Northwest	32,200	32,800	33,100	33,200	32,000	-600	-1.8%	200	0.6%
Danielson-Northeast	27,100	27,200	27,400	27,400	27,200	-100	-0.4%	-100	-0.4%

* Less than 0.05%

** Includes Native American tribal government employment

P = Preliminary

R = Revised

Starting with March, 2011, our monthly statewide and major LMA nonfarm job estimates have been taken over by the US Department of Labor Bureau of Labor Statistics. This is the final phase of transition in this program, which began in 2008. As a result of changes in the estimation procedures, you are likely to see more variability in month-to-month estimates of job counts. Caution should be used in interpreting any single month's estimate. The data are best interpreted to identify trends and cycles over several months and quarters. If you have any questions about these changes, please email us at: dol.lmi@ct.gov.

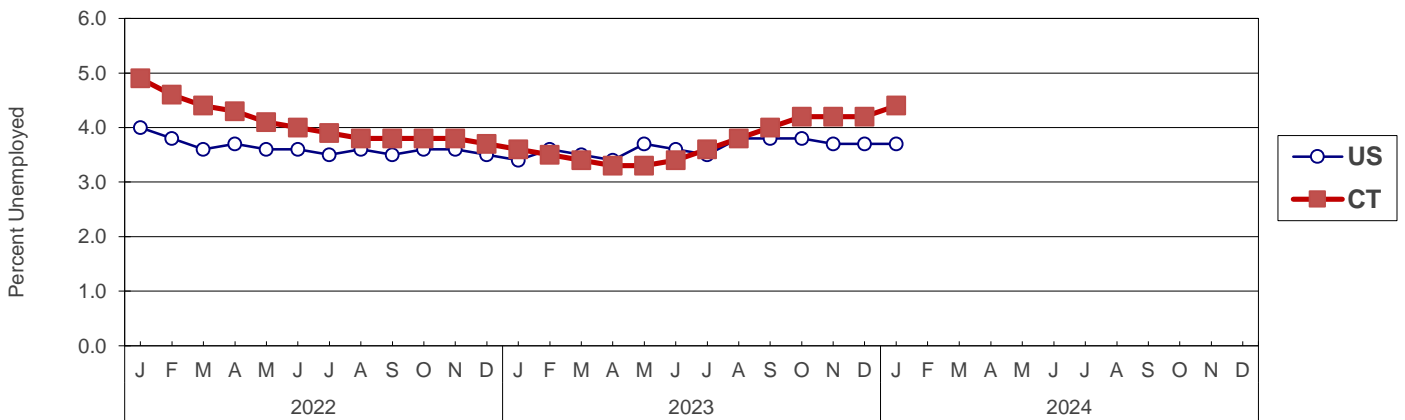
UNEMPLOYMENT

Persons Unemployed - by Place of Residence

CONNECTICUT AND THE UNITED STATES - Seasonally Adjusted

	Jan 2024 P		Jan 2023 R		Change		Dec 2023 R	
	Number	Rate	Number	Rate	Number	Points	Number	Rate
CONNECTICUT								
Unemployed	82,900	4.4	67,700	3.6	15,200	0.8	79,900	4.2
Labor Force	1,902,400		1,886,300		16,100		1,899,100	
UNITED STATES								
Unemployed	6,124,000	3.7	5,719,000	3.4	405,000	0.3	6,268,000	3.7
Labor Force	167,276,000		165,871,000		1,405,000		167,451,000	

U.S. AND CONNECTICUT UNEMPLOYMENT RATES - Seasonally Adjusted 2022 - 2024



LABOR MARKET AREAS - Not Seasonally Adjusted

	Jan 2024 P		Jan 2023 R		Change		Dec 2023 R	
	Number	Rate	Number	Rate	Number	Points	Number	Rate
Bridgeport-Stamford	24,100	5.2	18,900	4.1	5,200	1.1	19,400	4.2
Danbury	4,900	4.6	3,900	3.7	1,000	0.9	3,800	3.6
Danielson-Northeast*	2,100	4.9	1,800	4.2	300	0.7	1,700	3.9
Worcester NECTA	2,000	4.9	1,700	4.2	300	0.7	1,600	3.9
Hampton	100	3.7	100	3.6	0	0.1	100	3.2
Enfield	2,300	4.7	1,900	4.0	400	0.7	1,800	3.8
Hartford	30,500	4.9	24,300	3.9	6,200	1.0	24,300	4.0
New Haven	15,700	4.7	12,400	3.8	3,300	0.9	12,400	3.7
Norwich-New London	6,800	4.8	5,400	3.9	1,400	0.9	5,300	3.9
Torrington-Northwest**	2,300	4.9	1,900	4.1	400	0.8	1,700	3.7
Torrington NECTA	1,500	5.7	1,200	4.7	300	1.0	1,100	4.5
Litchfield	800	3.8	700	3.4	100	0.4	600	2.8
Waterbury	7,200	6.5	5,400	4.9	1,800	1.6	5,600	5.1
CONNECTICUT	95,000	5.0	75,300	4.0	19,700	1.0	75,600	4.0
UNITED STATES	6,778,000	4.1	6,378,000	3.9	400,000	0.2	5,907,000	3.5

P = Preliminary

R = Revised

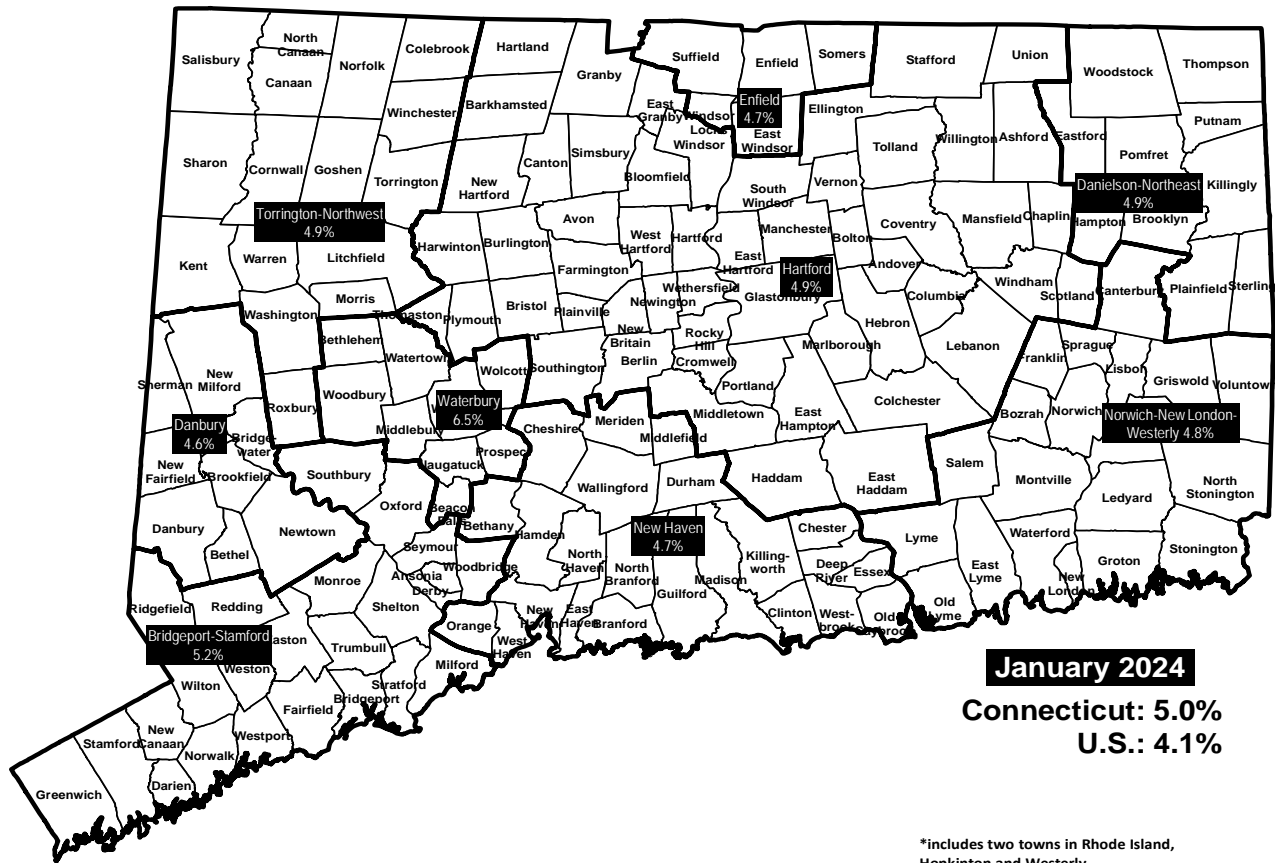
Labor force data included in this publication are developed in cooperation with the U.S. Department of Labor, Bureau of Labor Statistics.

* Worcester NECTA, CT part and Hampton LMA are combined ** Torrington Micropolitan NECTA and Litchfield LMA are combined

UNEMPLOYMENT RATES

Not Seasonally Adjusted

LABOR MARKET AREAS



HOURS AND EARNINGS

CONNECTICUT Statewide - Not Seasonally Adjusted

	Average Weekly Earnings				Average Weekly Hours				Average Hourly Earnings			
	Jan. 2024 P	Jan. 2023	Change over Yr.	Dec. 2023 R	Jan. 2024 P	Jan. 2023	Change over Yr.	Dec. 2023 R	Jan. 2024 P	Jan. 2023	Change over Yr.	Dec. 2023 R
Private Industry All Employees	\$1,238.43	\$1,206.00	\$32.43	\$1,237.16	33.3	33.5	-0.2	33.5	\$37.19	\$36.00	\$1.19	\$36.93
Manufacturing* Production Workers	\$1,188.40	\$1,190.07	-\$1.67	\$1,187.16	38.9	40.7	-1.8	39.0	\$30.55	\$29.24	\$1.31	\$30.44

* Production worker data have been impacted by the loss of a large, high-paying manufacturer from the monthly sample.

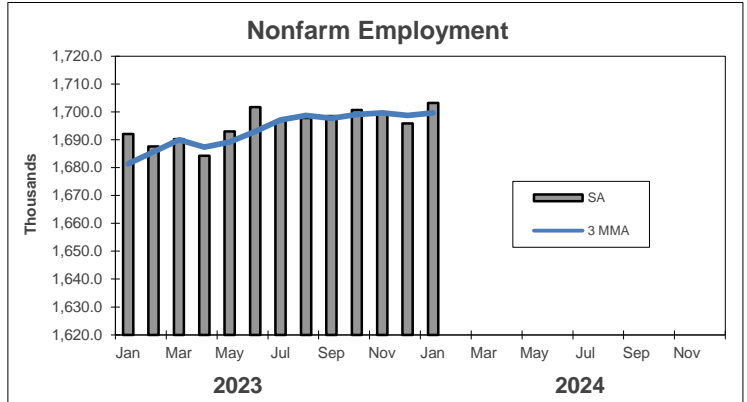
P = Preliminary R = Revised

Hours and earnings are also developed for the state's major industry sectors and Labor Market Areas. They can be found on our website at: www1.ctdol.state.ct.us/lmi

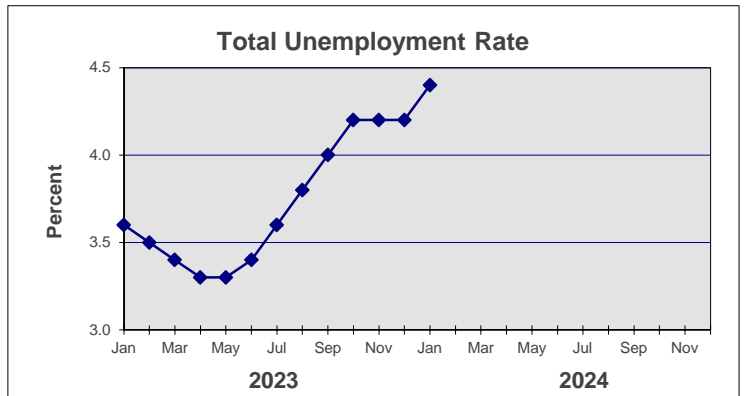
TRENDS

Seasonally Adjusted

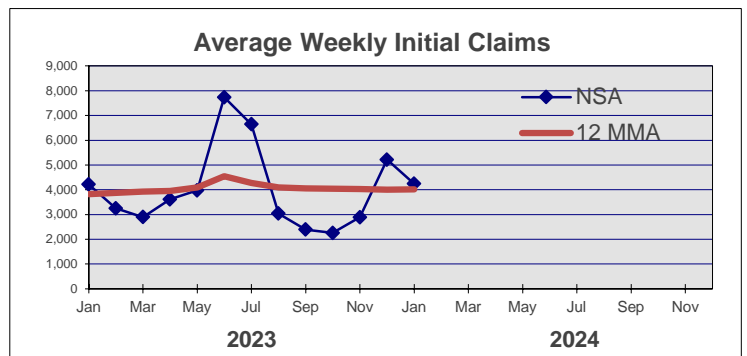
	Nonfarm Employment (000s)	Total Unemployment Rate
2023		
Jan	1,692.0	3.6
Feb	1,687.6	3.5
Mar	1,690.2	3.4
Apr	1,684.2	3.3
May	1,693.0	3.3
Jun	1,701.7	3.4
Jul	1,696.7	3.6
Aug	1,697.8	3.8
Sep	1,698.5	4.0
Oct	1,700.7	4.2
Nov	1,699.7	4.2
Dec	1,695.8 R	4.2



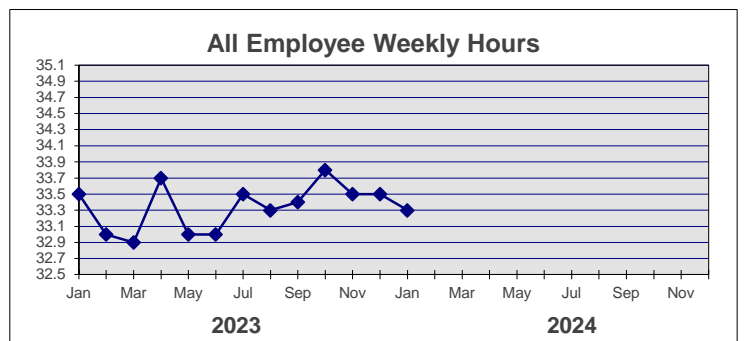
2024		
Jan	1,703.2 P	4.4 P
Feb		
Mar		
Apr		
May		
Jun		
Jul		
Aug		
Sep		
Oct		
Nov		
Dec		



	NSA Avg Weekly Initial Claims	All Employee Weekly Hours*
2023		
Jan	4,215	33.5
Feb	3,249	33.0
Mar	2,898	32.9
Apr	3,610	33.7
May	3,972	33.0
Jun	7,738	33.0
Jul	6,646	33.5
Aug	3,035	33.3
Sep	2,387	33.4
Oct	2,253	33.8
Nov	2,885	33.5
Dec	5,214	33.5 R



2024		
Jan	4,239	33.3 P
Feb		
Mar		
Apr		
May		
Jun		
Jul		
Aug		
Sep		
Oct		
Nov		
Dec		



* Not seasonally adjusted

P = Preliminary

R = Revised

** Labor-management dispute